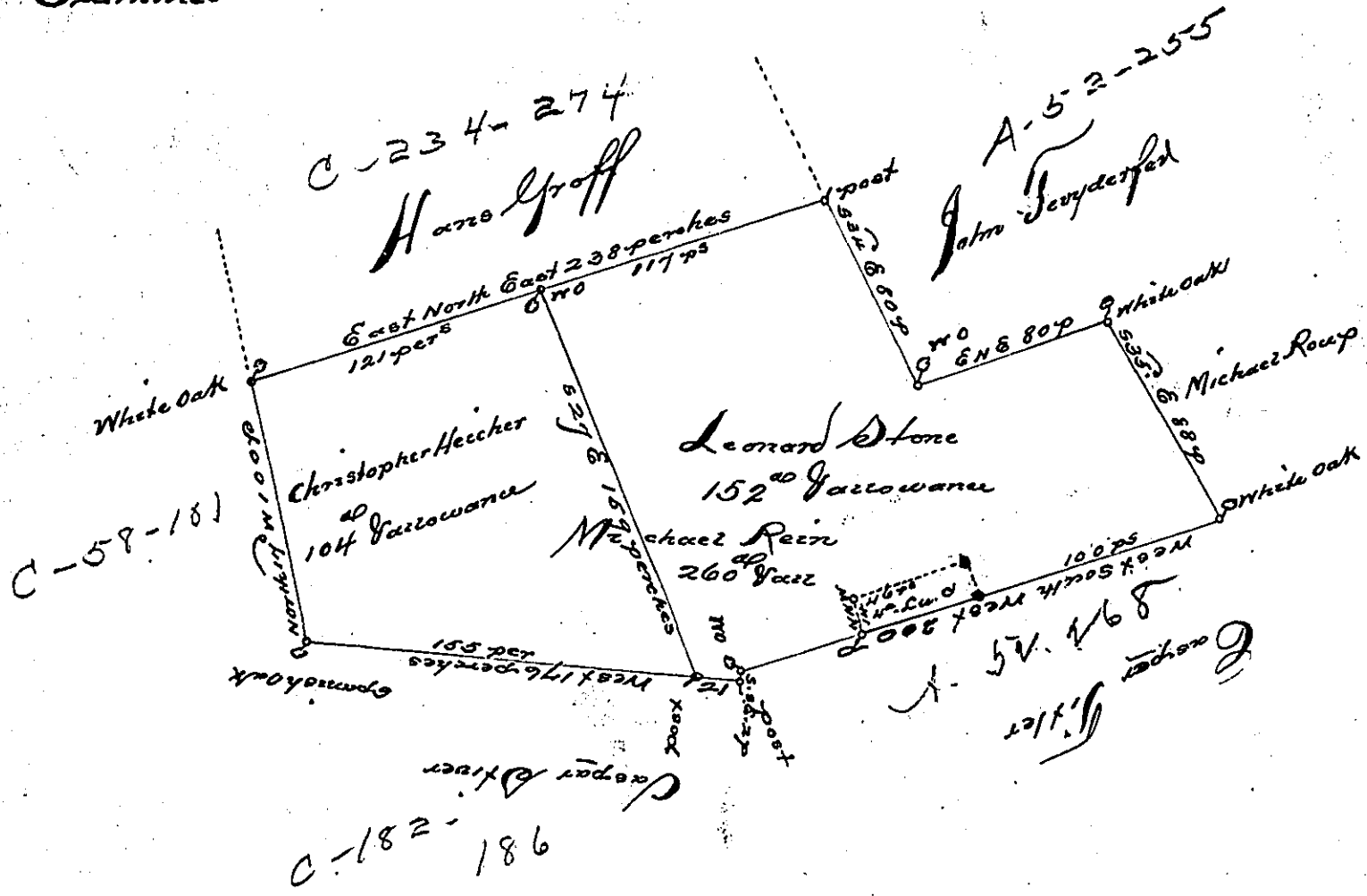


Examined



By virtue of a warrant from the Proprietor dated the 26th of October Anno Dom 1737. The above described Tract of Land was surveyed unto Michael Rein in Orle township in Lancaster County Beginning at a White Oak at a corner of the Land of John Fevderfet. Thence East North East by the same 80 perches to a White Oak &c containing Two hundred and sixty acres beside ye ar of 69 cents.

2<sup>d</sup> M<sup>o</sup> 1738

p. Sam Lightfoot

The <sup>d</sup> is Returned 17 May 1744 for the use of the Lutheran Congregation in Orle Township

IN TESTIMONY that the above is a copy of the original remaining on file in the Department of Internal Affairs of Pennsylvania, made conformably to an Act of Assembly approved the 16th day of February, 1833, I have hereunto set my Hand and caused the Seal of said Department to be affixed at Harrisburg, this first day of November, 1898,



James W. Latta  
Secretary of Internal Affairs.